

RELEASE NOTES

May 2024

BASALTE STUDIO | CORE - V7

WHAT'S NEW

Adelante modules
Basalte accounts

UPDATE SCHEDULE

HOW TO UPDATE

NEW INTEGRATIONS

Ketra lighting
Modbus TCP
KNX RELAY
Amazon Fire TV

IMPROVEMENTS AND FIXES

BASALTE CORE V7.1 (FIXES)

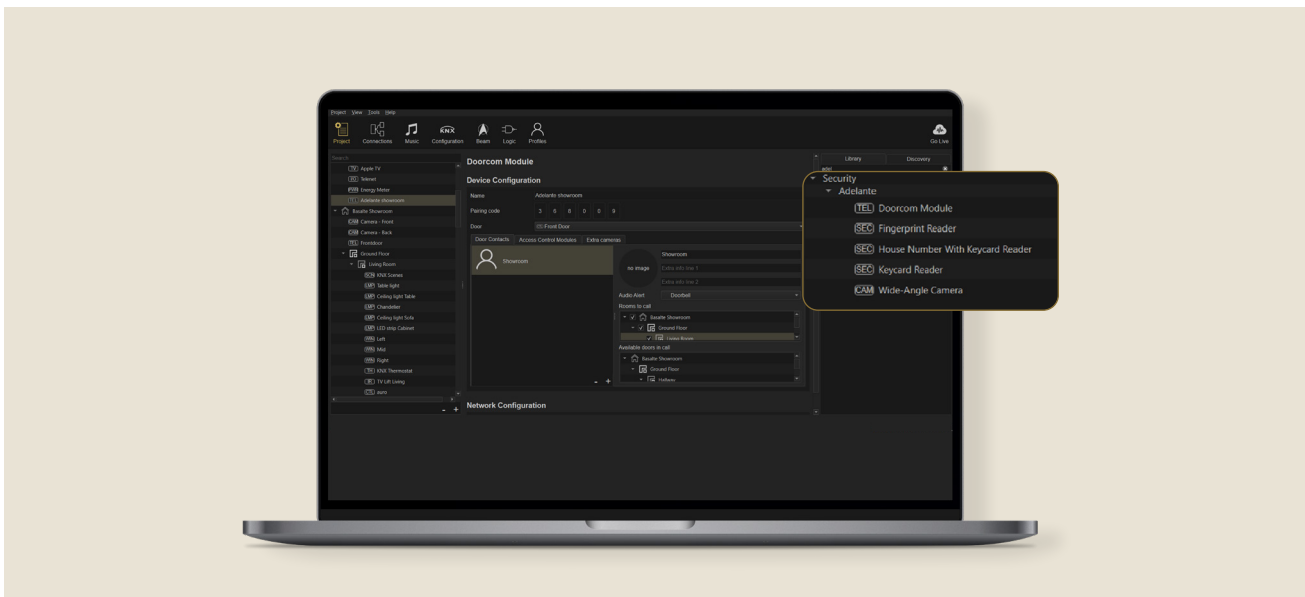
DEPRECATIONS

We are thrilled to announce a **major software update: version 7** for your Core server. Basalte Studio automatically updates to version 7.

WHAT'S NEW

Adelante modules easy-to-manage access control system

You can now manage different modules of our luxury door phone Adelante in Basalte Studio.



With version 7 for your Core server, you open the door for high-end residential access control. Our luxury door phone Adelante brings a secure, easy, and refined solution to your home.

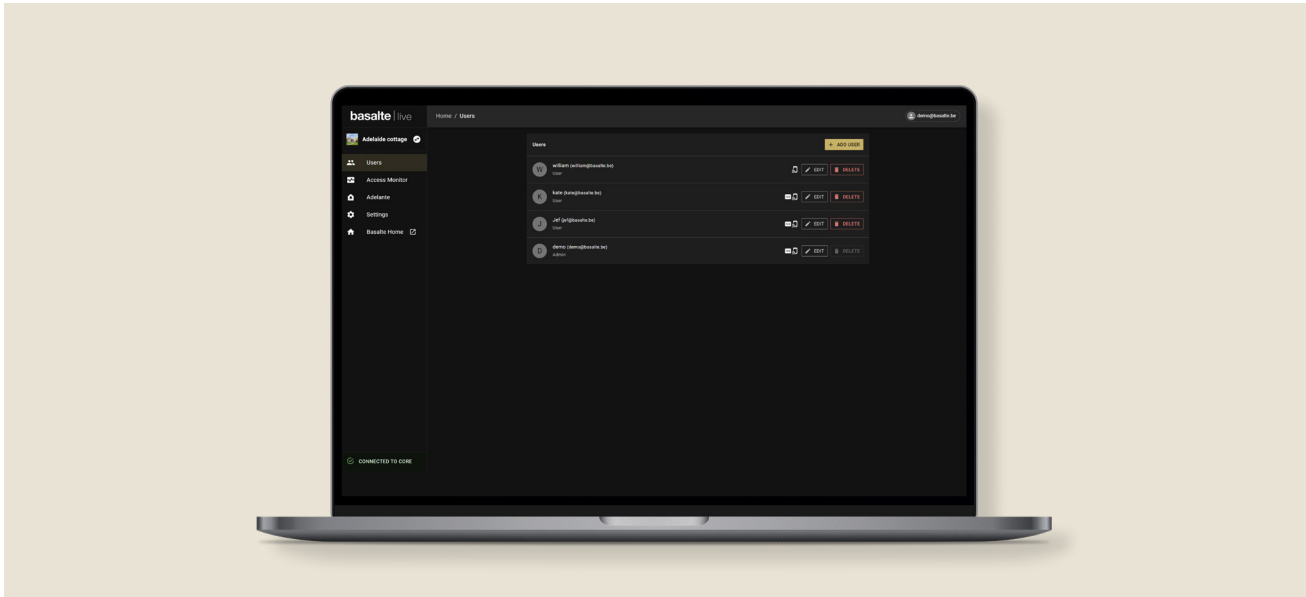
In Basalte Studio, you can now manage different Adelante modules:

- doorcom module
- keypad reader
- fingerprint reader
- wide-angle camera

Basalte accounts

simplified remote access to your own account

Good news, every user now has easy access to their own account.



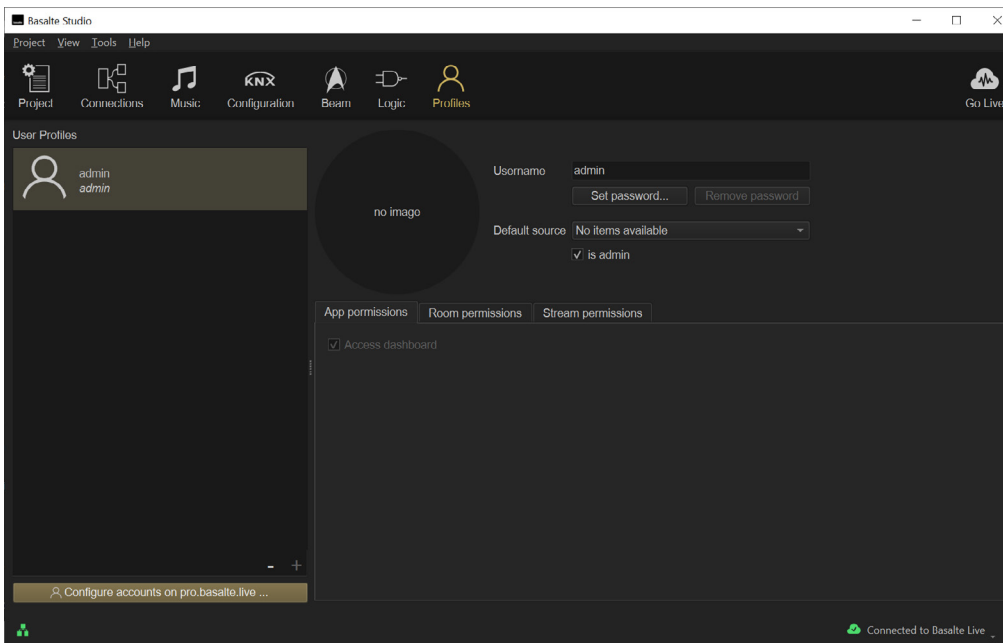
Previously, all users of a project shared a single Basalte account. You logged in to the Basalte Home app with this single account and then navigated to your own profile. This release gives every user easy access to their own project and account with a dedicated profile.

- integrator: manage projects and users via the integrator portal pro.basalte.live
- user admins: access your project and manage users via the customer portal basalte.live

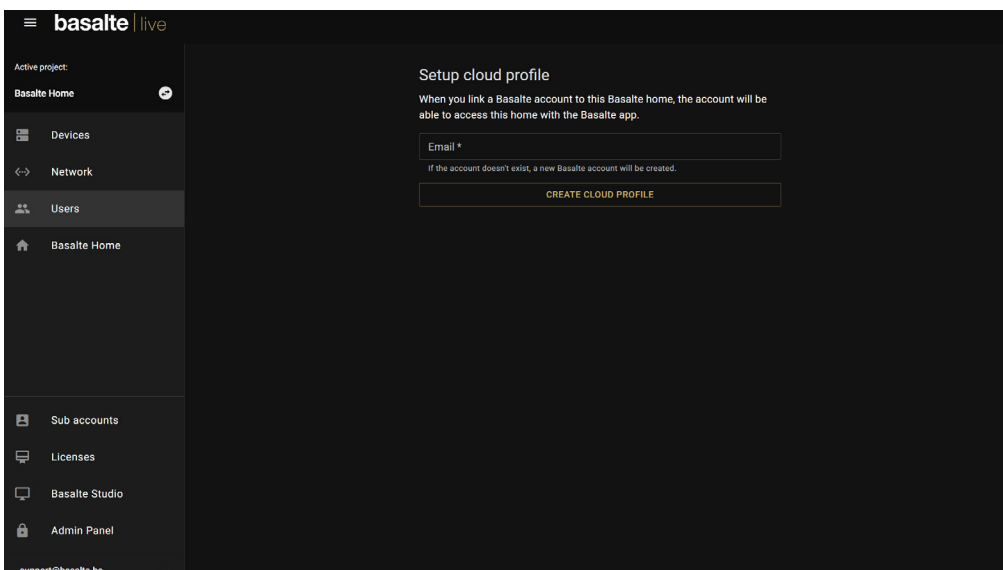
Learn more in the [webinar on how to use Basalte accounts](#).

how to create a Basalte account

1. navigate to 'profiles' in Basalte Studio
2. click on 'configure accounts' in pro.basalte.live



3. A browser opens up in the Pro Basalte Live. Invite new users to the project from here via the 'users' tab.



UPDATE SCHEDULE

The Core server update to version 7 is mandatory. You either manually update your Core server during the upcoming months or await the automatic update of all Core servers. This **automatic update is planned on 2 September 2024**.

If you wish to **access new features faster**, opt for the **fast track** procedure. Core servers on the fast track will be updated on **6 May 2024**.

Basalte Studio will **automatically update to version 7**.

HOW TO UPDATE

You can choose between a manual or a fast track procedure.

method 1: manual procedure

step 1 – schedule your update in Pro Basalte Live

1. go to pro.basalte.live
2. select the project that needs the update
3. select the Core Server
4. press 'schedule update' and the update will happen overnight

Type	Name	MAC	IP	Version
Core Plus	Core Plus	F8:DC:7A:7E:98:2E	172.149.3.123	6.7.2-3

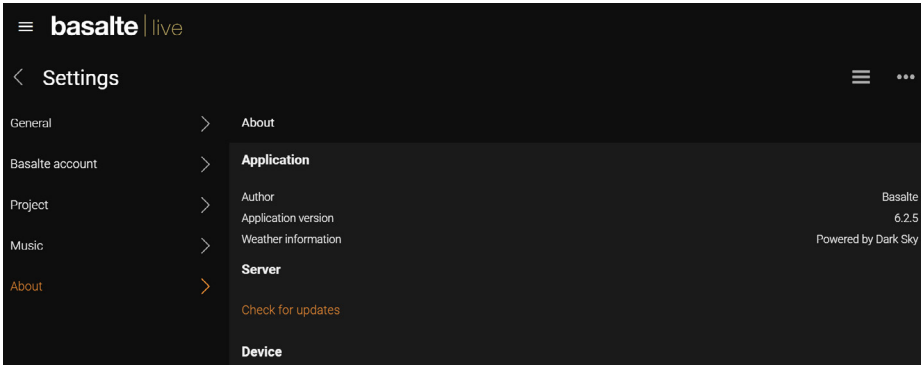
Local IP: 172.149.3.123
Remote IP: 213.251.68.58
MAC Address: F8:DC:7A:7E:98:2E
Software version: 6.7.2-3
Available updates: release: [6.9.0-4](#) Schedule release update
beta: [7.1.0-9](#) Schedule beta update
Fast track for updates:
Dynamic DNS: [configure...](#)

[DOWNLOAD LOGS](#) [REMOVE FROM ACCOUNT](#)

step 2 - update your Core server in the Basalte Home app

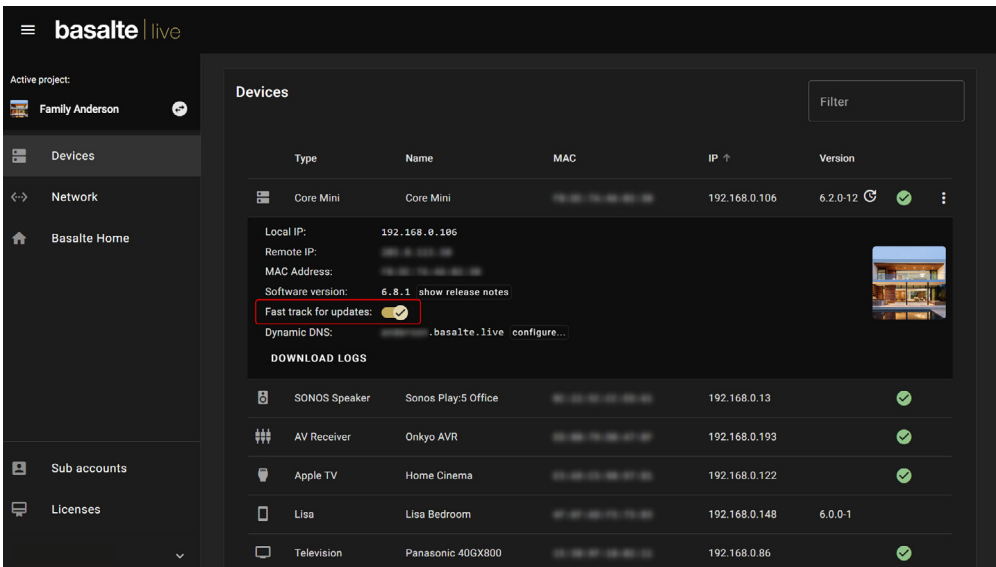
1. go to the Basalte Home app
2. press '...' in the right corner > 'settings' > 'about'
3. press 'check for updates'

Your Core server will now download the latest available update. Once the download is finished, your Core server is automatically updated.



method 2: fast track procedure

If you enable 'fast track for updates', your Core server automatically updates overnight. In this way, you always discover our latest and greatest features first.



NEW INTEGRATIONS



Ketra lighting

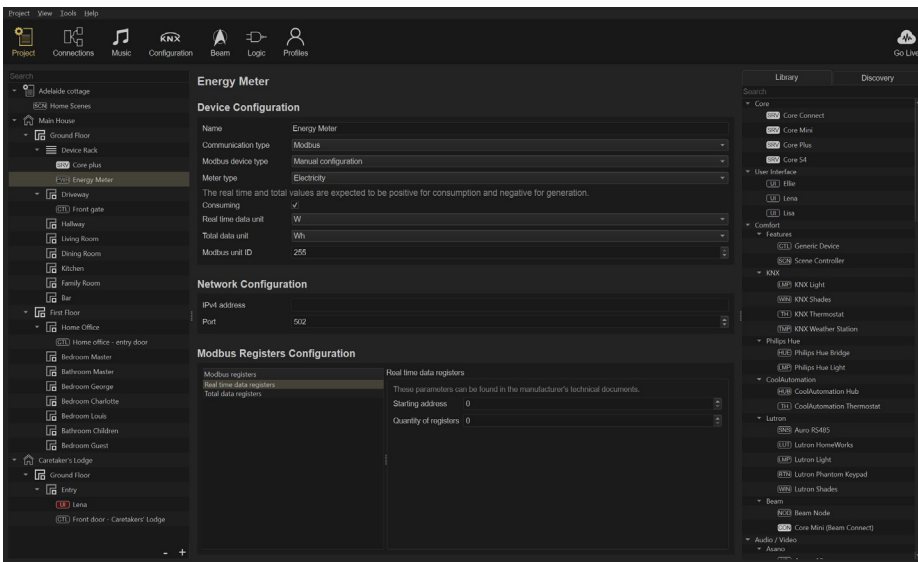
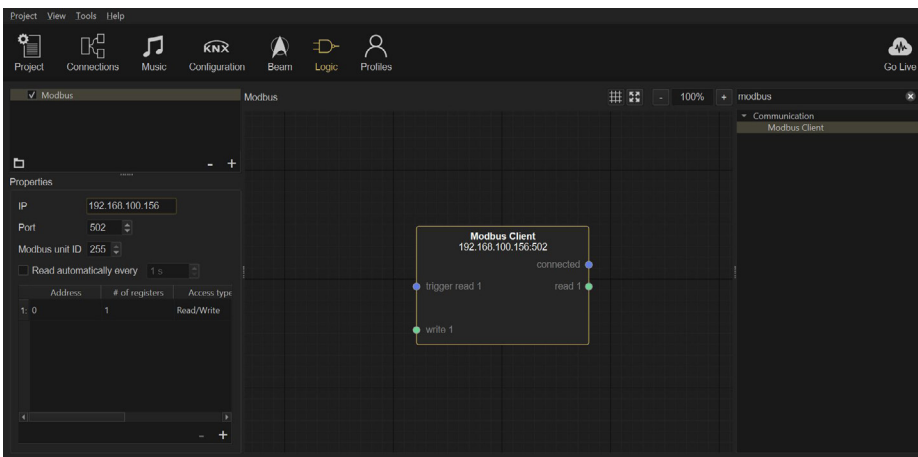
You can now seamlessly integrate wireless Ketra lighting through Lutron QSX. Add a Ketra light in Basalte Studio following the same procedure as adding any other Lutron light.



Modbus TCP

We enabled Modbus TCP communication in our Core servers. This makes it super easy to connect solar inverters for energy monitoring.

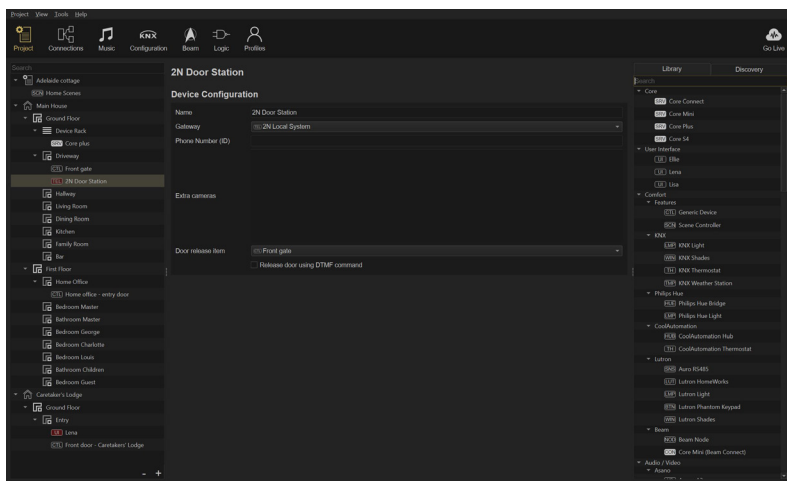
Meet the new Modbus Logic block for next-level Modbus communication over IP.





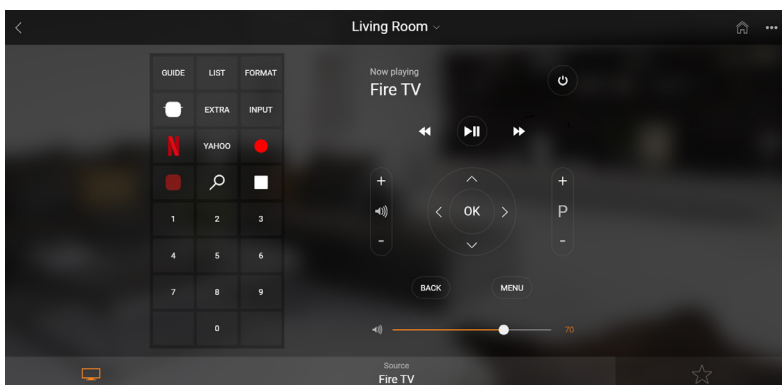
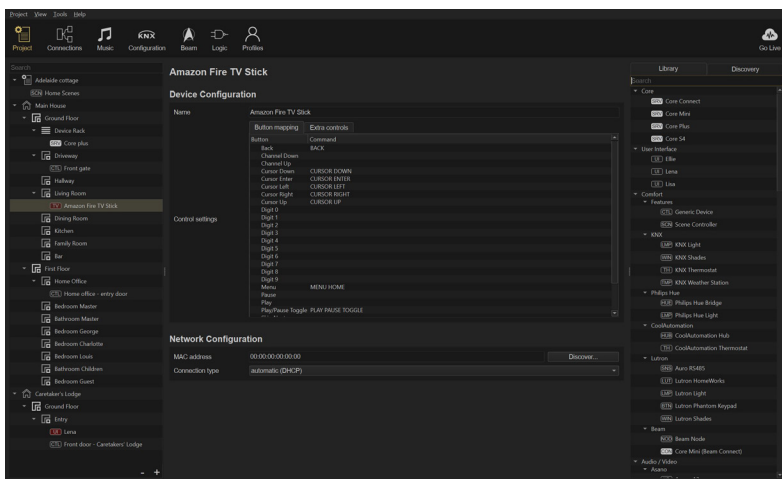
KNX RELAY

You can now unlock doors using a KNX relay during a third-party door phone call. Previously, the only option was to open a door through a DTMF command.



amazon fireTV Amazon Fire TV

If you use a Fire TV stick, you are now able to setup dynamic button mapping in Basalte Studio. It is also possible to configure extra controls like a Netflix button and so much more.



IMPROVEMENTS AND FIXES

updated Philips Hue API

We added support for the new Philips Hue API enabling more responsive feedback.

feedback KNX shades

The KNX shades logic block has been fixed to provide accurate feedback upon reaching specific positions. For instance, when you send a command to close the shades to 80%, the system will give you feedback once the shades reach this designated position.

Spotify

We addressed a situation in which music chosen from the Spotify library failed to initiate when another Spotify account remained connected to the server via Spotify Connect.

Sony TV

Enhancements have been implemented to improve the Wake-on-LAN (WOL) functionality for Sony TVs.

turn the music up

From now on, your favourite music keeps playing while pushing a project to the server.

KNX lights

We enhanced the RGB behavior within scenes. When activating a scene that turns on an RGB light, the Core server now avoids sending multiple commands.

AV room logic block

We fixed an issue where the 'off feedback' was missing in the AV room when turning off the tv in an AVR zone.

look-up table logic block

We have improved the functionality of the look-up table logic block by using rounded numbers, resulting in a better matching process.

BASALTE CORE V7.1 (FIXES)

OS V7.1.7-1

fixed energy meters not showing real-time data

When a core server had no internet connection. The energy monitor was not showing any real-time power consumption. After this fix, real-time energy will be visible even when the core has no internet connection.

fixed LG TV not setting the right input (after TV update)

There was a slight change in behavior after an update of the LG TV OS. We adopted this change also in our core OS.

fixed Studio asking for programming key after pushing

After pushing a new configuration to the server, Studio always asked for the programming key, even though the server push was successful.

fixed core S4 reverting to the last pushed backup/project on every reboot

We fixed a rare issue for Core S4 that could occur when pushing a new project to a Core S4 server. Any subsequent change to scenes, playlists, ... would be lost after a reboot.

DEPRECATIONS

deprecation of alarms on Core S4

In projects with older configurations which only contained music functionalities of the original Asano S4 (no lights, no scenes, ...), it was still possible to configure alarms on a profile basis.

This feature has been deprecated to better align the user experience with other Basalte Home features.

Existing alarms will automatically be converted to scheduled home scenes. Attributes such as source, favourite and volume level will be incorporated in a newly created home scene. This home scene will be activated by the scheduler at the original alarm time.